

# Te Mana Hauora Māori Māori Health Authority

## Operating model and high level structure

# The genesis

## **Honouring those who led the way**

The genesis for a Māori Health Authority has a long history and 'stands upon the shoulders' of many rangatira

# How Health New Zealand and the Māori Health Authority work together

## TŌ TĀTOU WAKA HOURUA OUR DOUBLE-HULLED WAKA

The waka hourua concept in a health context is not new. We acknowledge those other waka whose bows continue to cut through waves in these waters. The fundamental premise of the analogy is to bring together two groups and draw equally on the skills, talents, attributes and leadership of each to drive improved outcomes for our communities. Our waka hourua seeks to drive transformational change for Aotearoa – New Zealand's health system to support better outcomes and wellbeing for all of our people – whakahiko i te oranga whānau.



**KI TE PAE TAWHITI**  
OUR WAY FOWARD ➡➡➡

The graphic features a teal background with a stylized landscape of mountains and water. At the top, there are white, curved lines resembling a traditional Māori waka hourua (canoe) structure. The text is centered and uses a clean, sans-serif font. The overall aesthetic is modern and culturally inspired.

# TE PAE TAWHITI VISION

**“Whakahiko i te oranga whānau”**

Our vision serves as the **destination** for our waka hourua – there are many routes and different conditions and environs to chart our way through. It serves to provide hope for the whānau it seeks to serve, and inspiration to those charged with crewing the waka hourua.

The whakataukī underpinning our vision is:

**E kore tēnei whakaoranga e huri ki tua o aku mokopuna – our mokopuna shall inherit a better place than I inherited.**

# Māori Health Authority levers for change

Crown-Māori relations ensuring Te Tiriti is embedded

Partnership with Health NZ

Partnership with Iwi Māori Partnership Boards

Partnership with Others (e.g. MoH, intersectoral)

Strategy

Policy

Direct Commissioning and Co-commissioning

Planning – NZ Health Plan, Māori Health Plan

Whānau experience, voice and engagement

People workforce

System intelligence & monitoring

Te Ao Māori Innovation

# Some things that are important to us

What matters the most – are whānau better off?

Whānau as direction setters

Whānau-centred

Strengths not deficits

Whole system accountability

Outcomes not just outputs or inputs

Systems and services are enablers

Frequency and quality of oranga data

Te Ao Māori

# Wāhine leadership



**Riana Manuel**

(Ngāti Pukenga, Ngāti Maru, Ngāti Kahungunu)  
CEO interim Māori Health Authority



**Fepulea'i Margie Apa**

CEO interim Health NZ

(Handed over to  
Riana here)

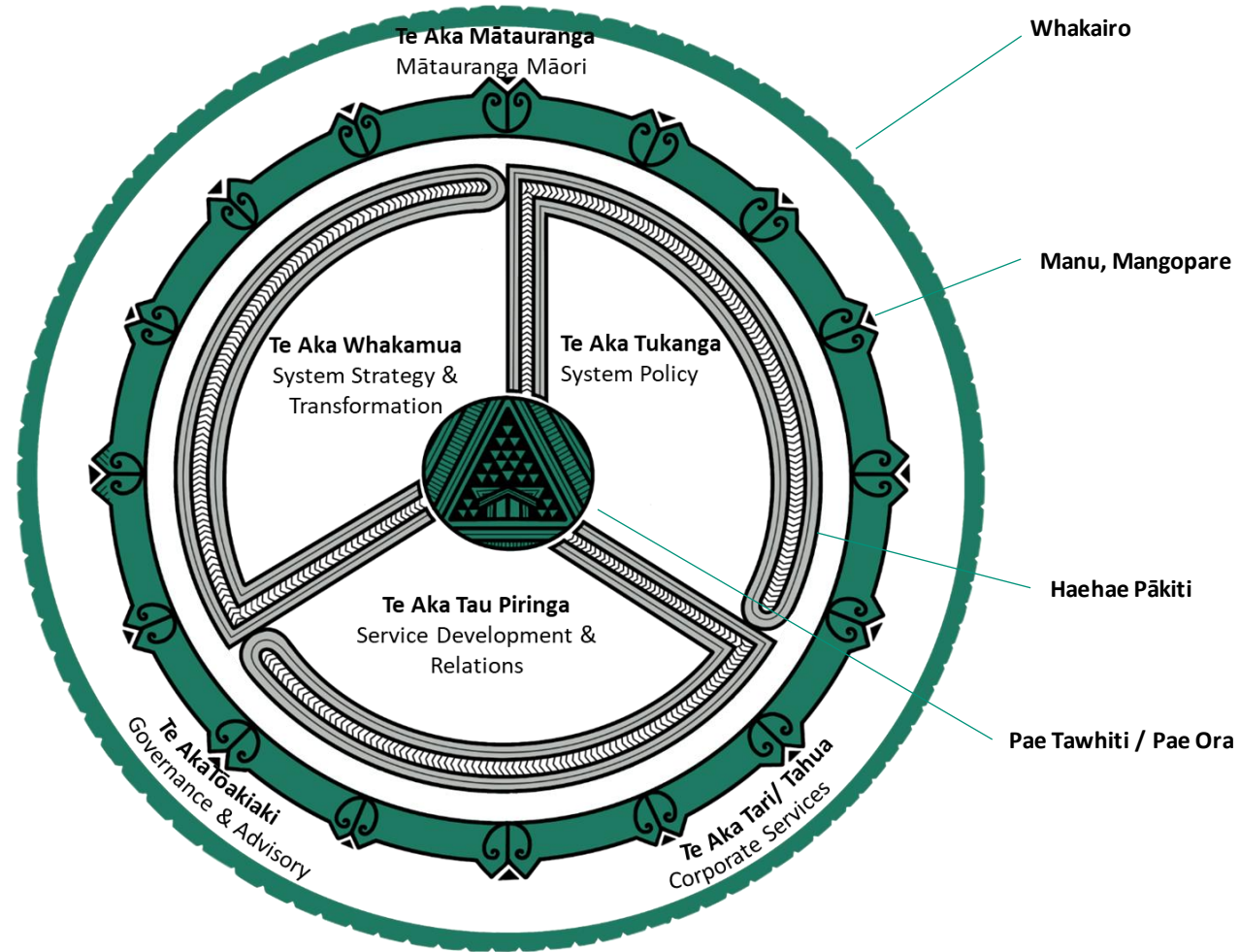
# The Māori Health Authority's organisational structure





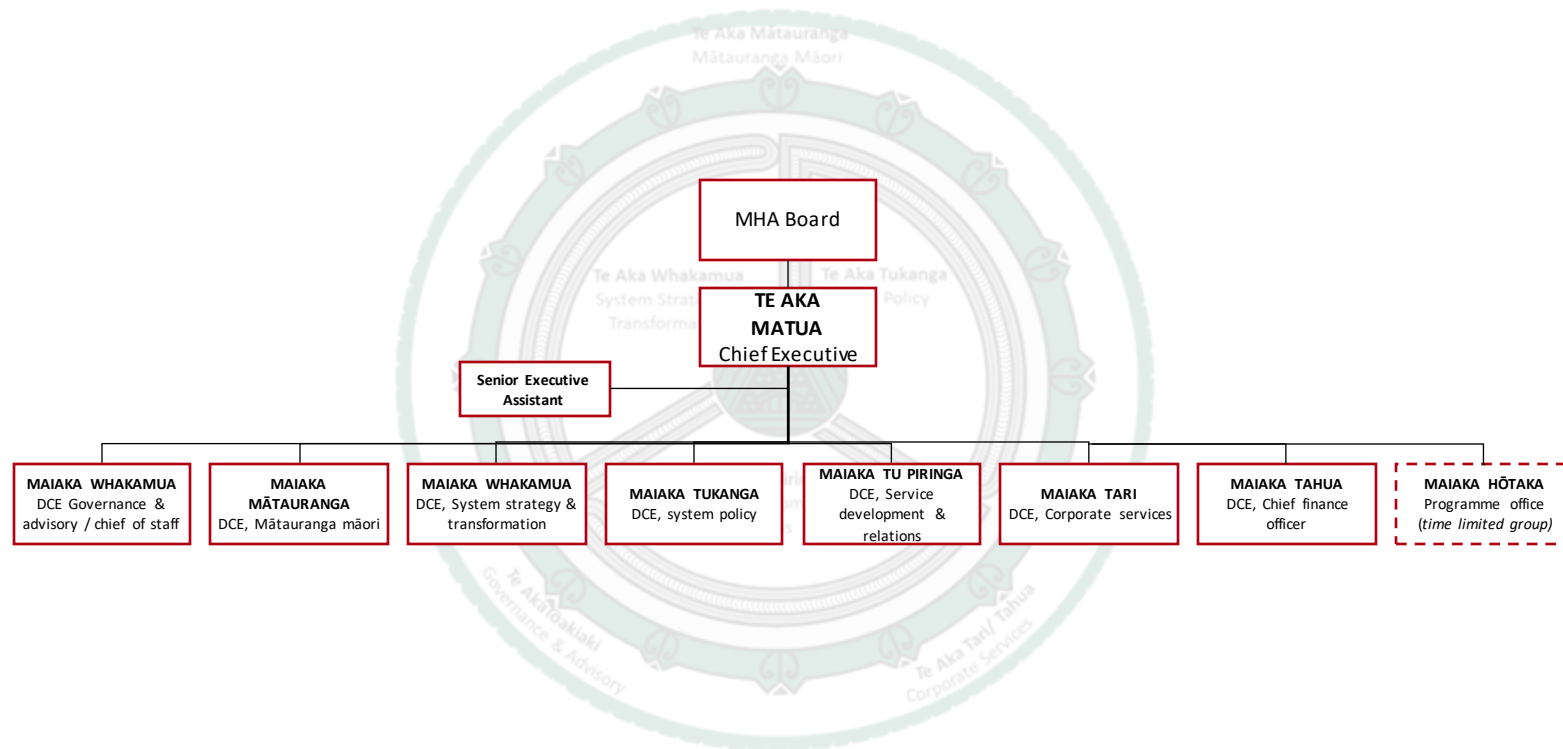
## The future organisational structure for the Māori Health Authority

- The MHA's future organisational structure has been designed along functional lines and the five core functional building blocks. It has been organised into six directorates, depicted by a sixteen-point wind compass.
- The organisational structure supports the analogy of a waka hourua on a journey to Pae Tawhiti using the traditional compass to help navigate. The design of the MHA on the traditional compass provides clear direction and purpose.



# The future leadership structure for the Māori Health Authority

## MHA organisation structure



- The MHA has been designed on the star compass to also depict our anticipated work flow. While the standard organisational diagram doesn't feature in our design on purpose, we have provided one for shared understanding of the intended national leadership form; and function of the MHA.